

Parts catalog

Legend

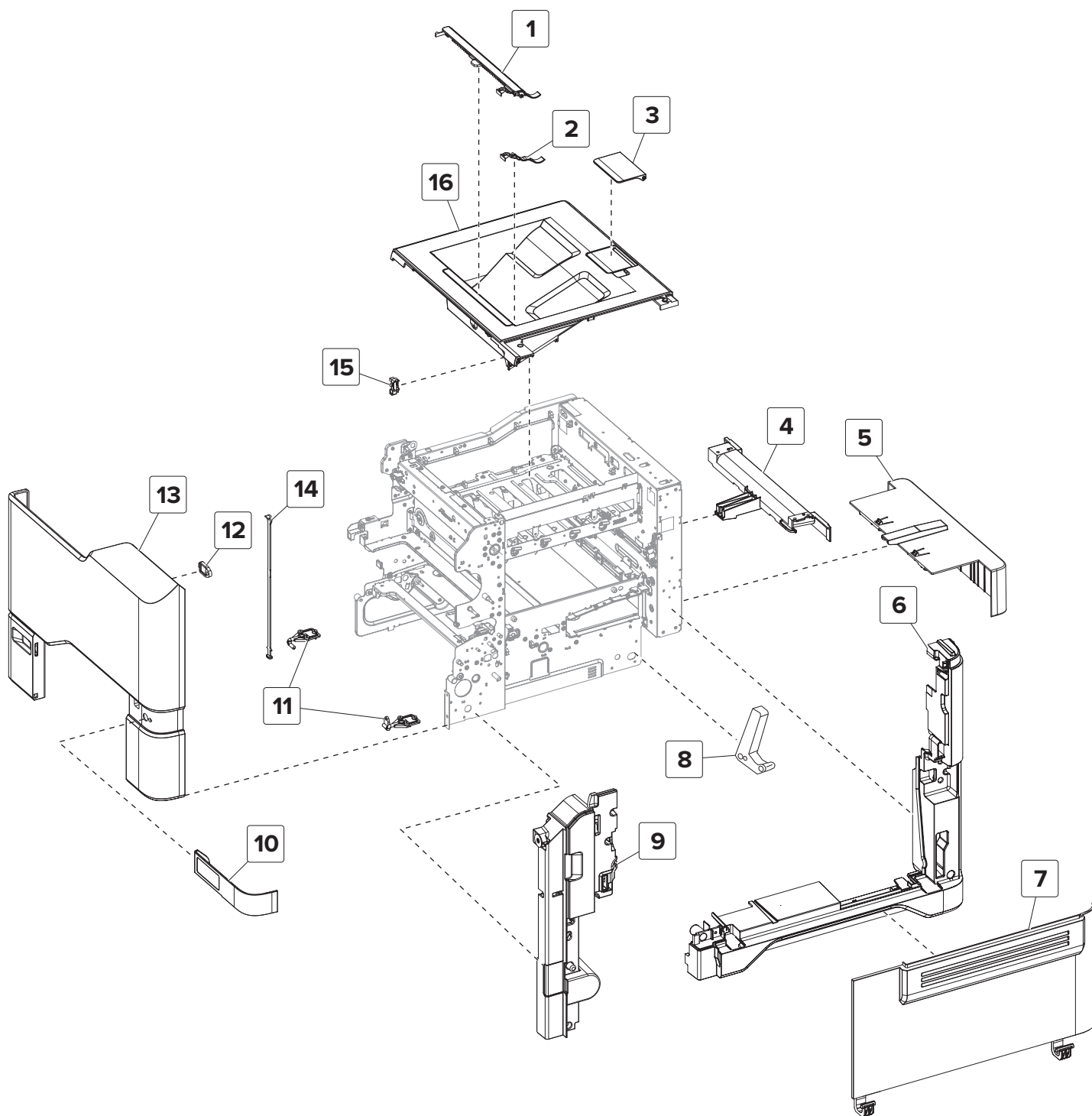
The following column headings are used in the parts catalog:

- **Asm-index**—Identifies the item in the illustration
- **P/N**—Identifies the part number of a FRU
- **Units/mach**—Refers to the number of units in a printer
- **Units/opt**—Refers to the number of units in an option
- **Units/FRU**—Refers to the number of units in a FRU
- **Description**—A brief description of the part

The following abbreviations are used in the parts catalog:

- **NS** (not shown) in the Asm-index column indicates that the part is procurable but is not shown in the illustration.
- **PP** (parts packet) in the Description column indicates that the part is contained in a parts packet.

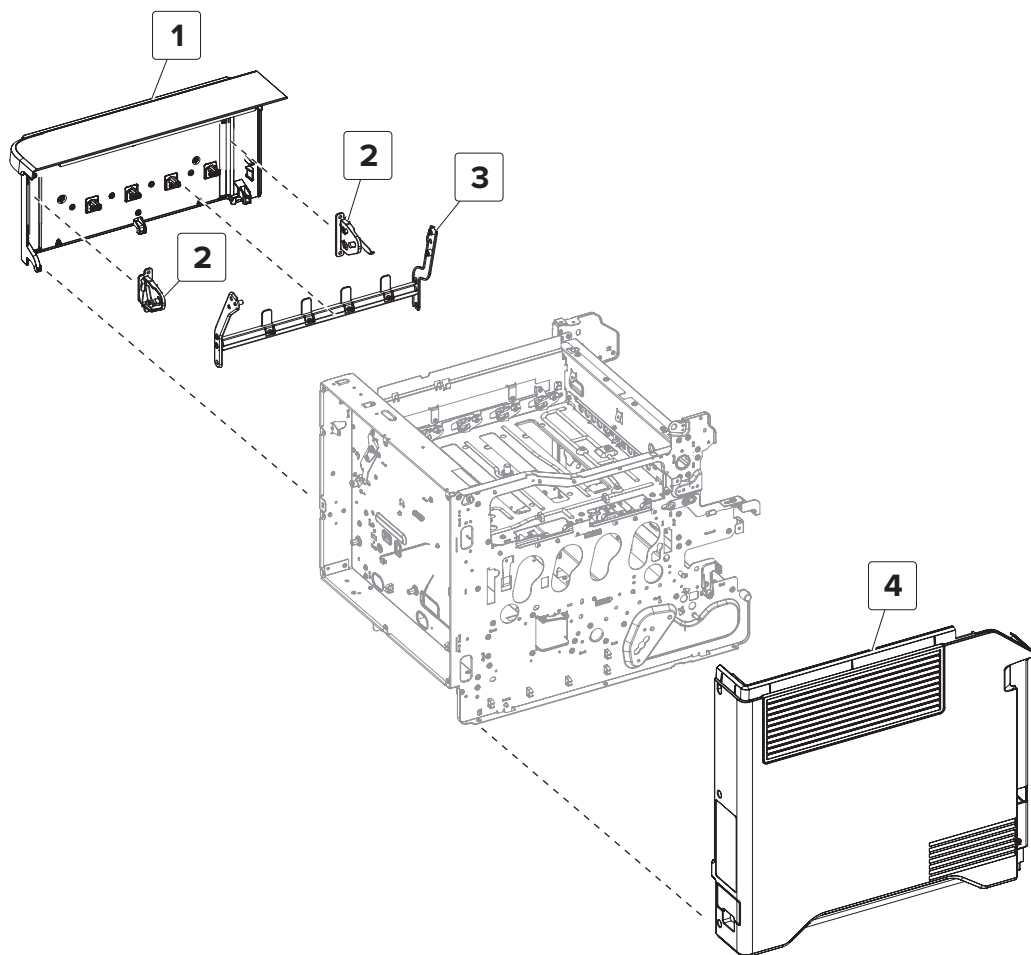
Assembly 1: Covers 1



Assembly 1: Covers 1

Asm-index	P/N	Units/opt	Units/FRU	Description	Removal procedure
1	41X0773	1	1	Output bin exit cover	“Output bin exit cover removal” on page 367
2	41X0772	1	1	Output bin flag	“Output bin flag removal” on page 367
3	41X0410	1	1	Bin extender	--
4	41X0424	1	1	Rear handle cover	--
5	41X0408	1	1	Rear tray cover	--
6	41X0419	1	1	Right cover	“Right cover removal” on page 272
7	41X0403	1	1	Imaging unit cover	“Imaging unit cover removal” on page 324
8	41X0686	1	1	TPS wiper mechanism	“TPS wiper mechanism removal” on page 330
9	41X0421	1	1	Motor cover	“Motor cover removal” on page 273
10	41X0401	1	1	Tray indicator cover	--
11	41X0567	2	1	Front cover hinges	“Front cover hinges removal” on page 368
12	41X0560	1	1	Front door bracket	--
13	41X0411	1	1	Front cover	“Front cover removal” on page 265
14	41X0380	2	1	Front door strap	--
15	41X0570	1	1	Sensor (bin full)	--
16	41X0409	1	1	Top cover	“Top cover removal” on page 268
NS	41X0448	1	1	Sensor (interlock assembly)	--

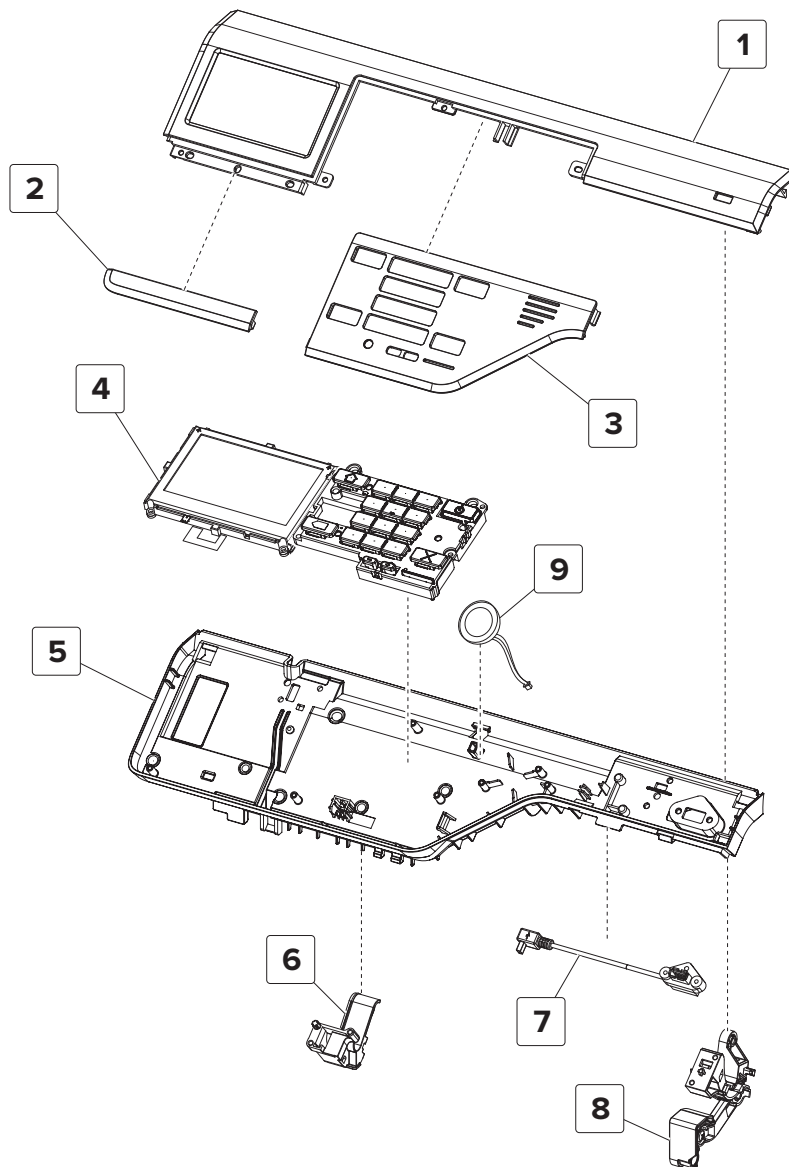
Assembly 2: Covers 2



Assembly 2: Covers 2

Asm-index	P/N	Units/mach	Units/FRU	Description	Removal procedure
1	41X0414	1	1	Toner door	“Toner door removal” on page 276
2	41X0558	1	2	Toner door mount bracket	“Toner door mount bracket removal” on page 278
3	41X0415	1	1	Toner door mount	“Toner door mount removal” on page 279
4	41X0412	1	1	Left cover	“Left cover removal” on page 271
NS	41X1009	1	1	External air filter	“External air filter removal” on page 280

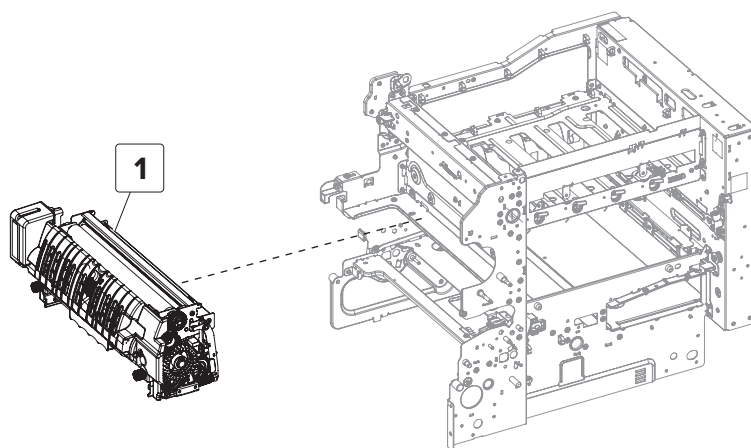
Assembly 3: Control panel



Assembly 3: Control panel

Asm-index	P/N	Units/mach	Units/FRU	Description	Removal procedure
1	41X0416	1	1	Upper control panel cover	“Upper control panel removal” on page 280
2	41X0871	1	1	C620 badge cover	“Badge cover removal” on page 283
2	41X0872	1	1	C720 badge cover	“Badge cover removal” on page 283
2	41X0873	1	1	C4150 badge cover	“Badge cover removal” on page 283
3	41X0422	1	1	Number pad cover	“Number pad cover removal” on page 284
4	41X0050	1	1	4.3-in. control panel	“Upper control panel removal” on page 280
5	41X0423	1	1	Control panel base cover	“Control panel base cover removal” on page 287
6	41X0561	1	1	Left control panel arm	“Control panel arms removal” on page 284
7	41X0441	1	1	Control panel USB cable	--
8	41X0562	1	1	Right control panel arm	“Control panel arms removal” on page 284
9	41X0399	1	1	Speaker	“Speaker removal” on page 286

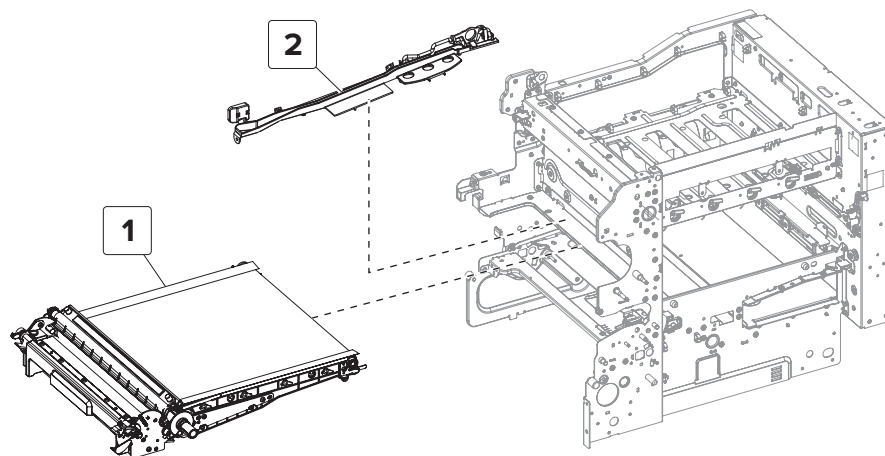
Assembly 4: Fuser



Assembly 4: Fuser

Asm-index	P/N	Units/mach	Units/FRU	Description	Removal procedure
1	41X0251	1	1	CS72x fuser type 02, 100V	“Fuser removal” on page 333
1	41X0252	1	1	CS72x fuser type 00, 110-120V	“Fuser removal” on page 333
1	41X0253	1	1	CS72x fuser type 01, 220-240V	“Fuser removal” on page 333
1	41X0254	1	1	CS72x fuser type 07, 100V (narrow media)	“Fuser removal” on page 333
1	41X0255	1	1	CS72x fuser type 05, 110-120V (narrow media)	“Fuser removal” on page 333
1	41X0256	1	1	CS72x fuser type 06, 220-240V (narrow media)	“Fuser removal” on page 333

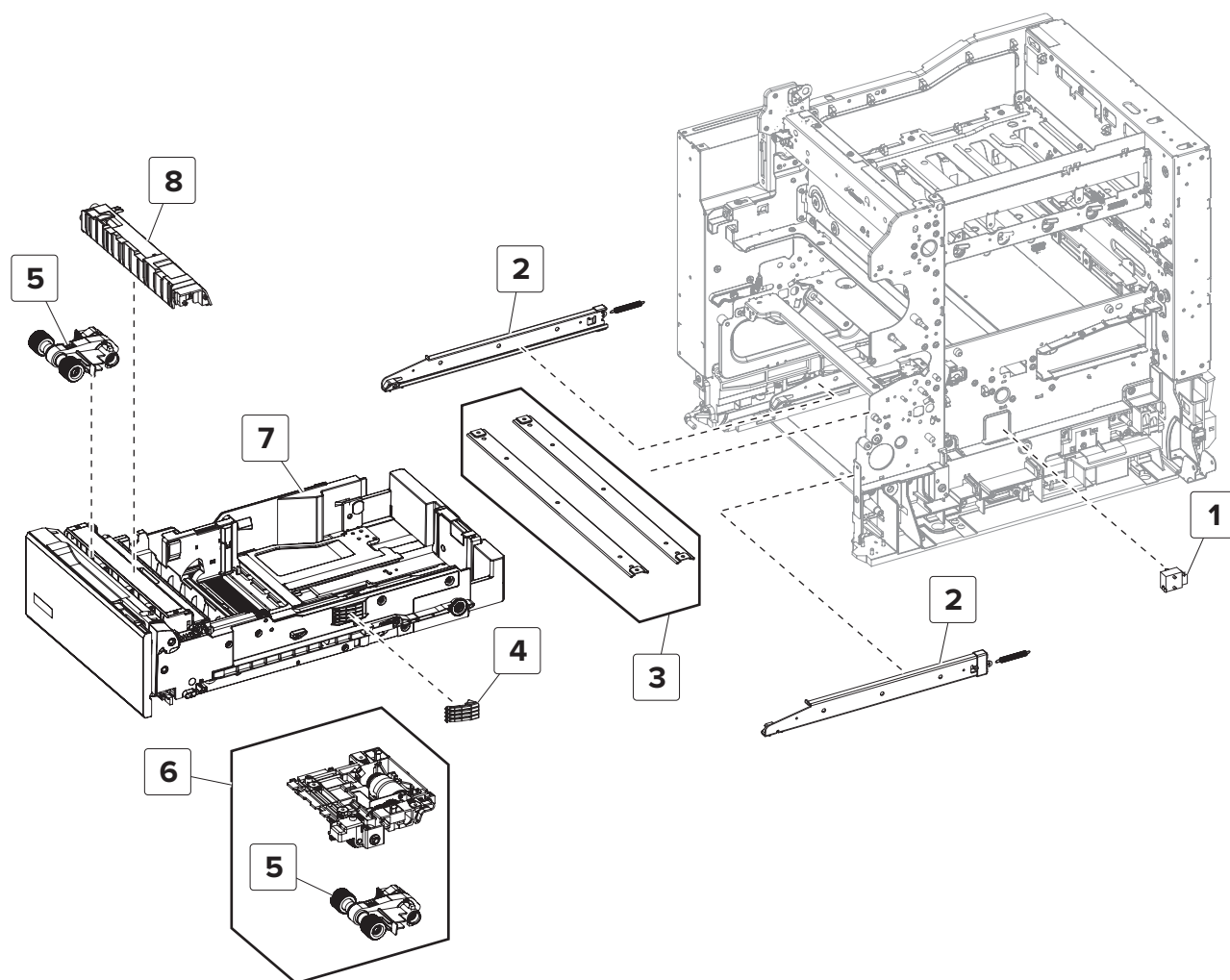
Assembly 5: Transfer module



Assembly 5: Transfer module

Asm-index	P/N	Units/mach	Units/FRU	Description	Removal procedure
1	40X9929	1	1	Transfer module	“Transfer module removal” on page 334
2	41X0683	1	1	Transfer module guide rail	“Transfer module guide rail removal” on page 336

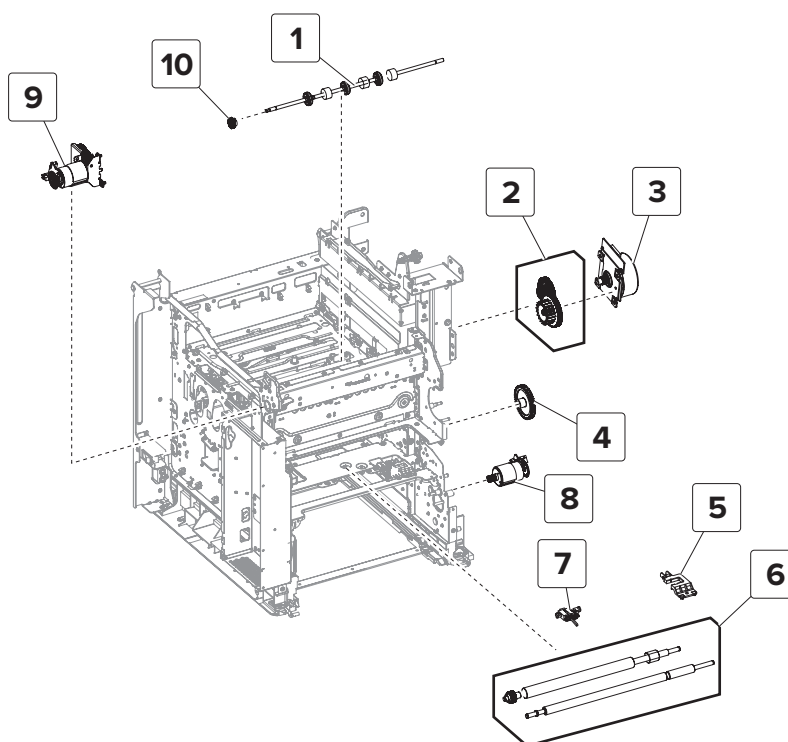
Assembly 6: Paper feed



Assembly 6: Paper feed

Asm-index	P/N	Units/mach	Units/FRU	Description	Removal procedure
1	40X7911	1	1	Sensor (paper size)	“Sensor (paper size) removal” on page 312
2	41X0372	1	1	Tray rails	“Tray rail removal” on page 369
3	41X0825	2	1	Support strap	--
4	41X0373	1	1	Paper size sensor actuators	--
5	41X0956	2	1	Pick roller (tray 1 and MPF)	--
6	41X0396	1	1	Media feeder	“Media feeder removal” on page 373
7	41X0268	1	1	550-sheet tray	--
8	41X0374	1	1	Separation block	--

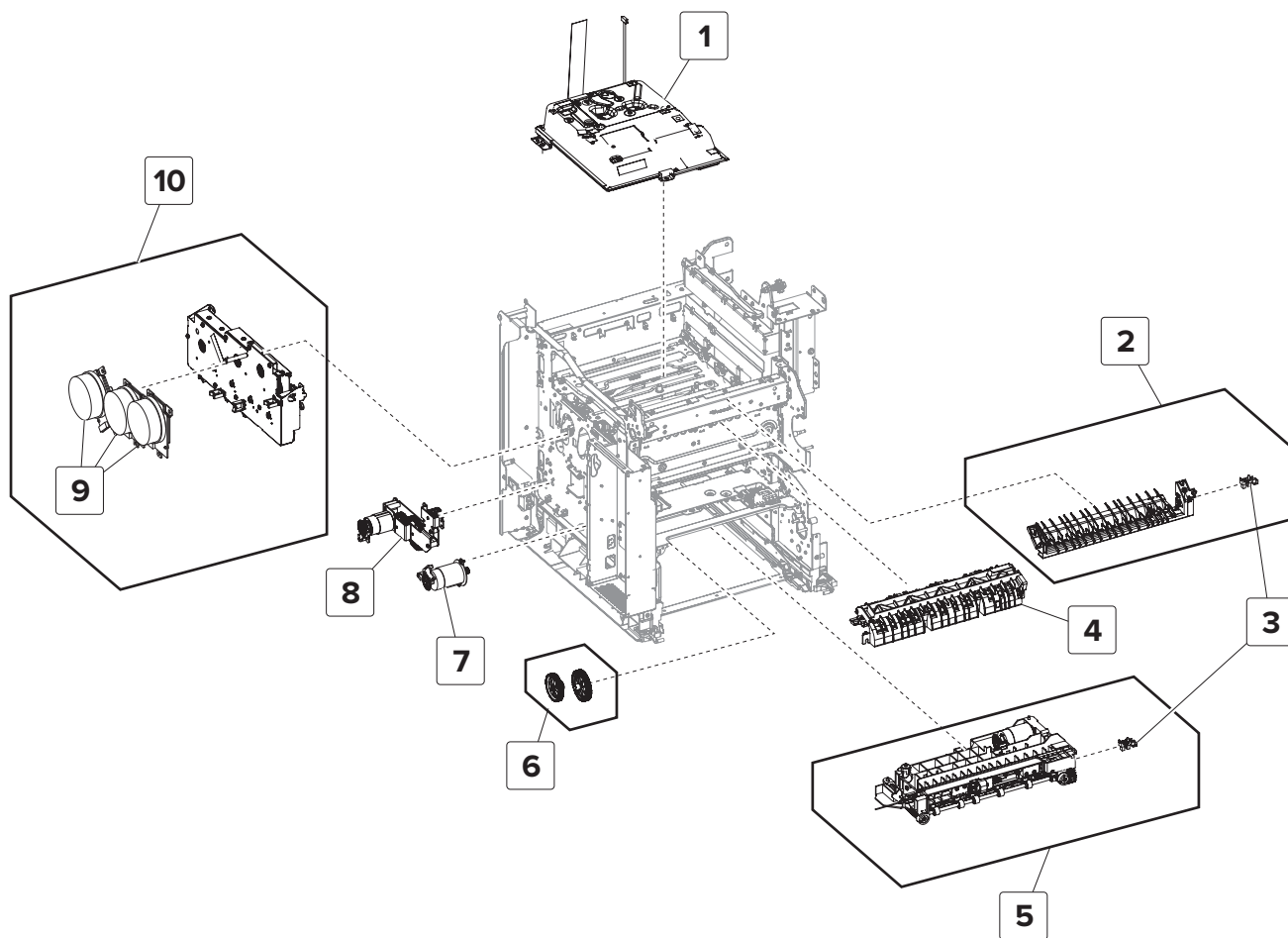
Assembly 7: Paper path 1



Assembly 7: Paper path 1

Asm-index	P/N	Units/mach	Units/FRU	Description	Removal procedure
1	41X0390	1	1	Output roll	“Output roll removal” on page 364
2	41X0395	1	1	Fuser drive gear	--
3	41X0001	1	1	Motor (fuser)	“Motor (fuser) removal” on page 318
4	41X0757	1	1	Waste toner bottle idler gear	“Waste toner bottle idler gear removal” on page 324
5	41X0450	1	1	Sensor (media type)	“Sensor (media type) removal” on page 340
6	41X0386	1	1	Deskew rollers	“Deskew rollers removal” on page 342
7	41X0385	1	1	Sensor (input)	“Sensor (input) removal” on page 341
8	41X0381	1	1	Motor (duplex/MPF)	“Motor (duplex/MPF) removal” on page 315
9	41X0451	1	1	Motor (output)	“Motor (output) removal” on page 297
10	41X0391	1	1	Output gear	--
NA	41X0392	1	1	Output drive	--

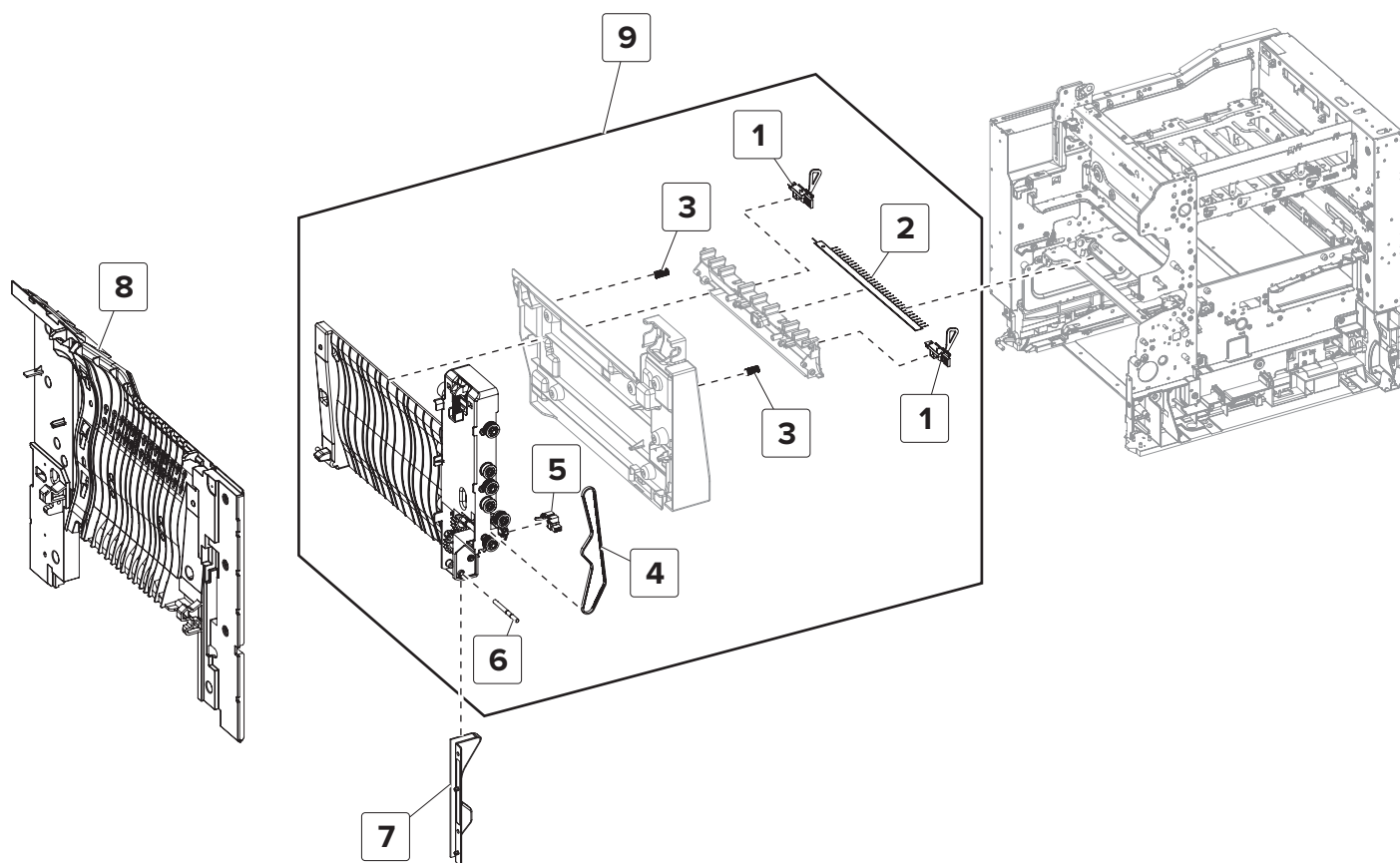
Assembly 8: Paper path 2



Assembly 8: Paper path 2

Asm-index	P/N	Units/mach	Units/FRU	Description	Removal procedure
1	41X0265	1	1	Printhead	“Printhead removal” on page 361
2	41X0389	1	1	Diverter	“Diverter removal” on page 350
3	41X0570	2	1	Sensor (duplex path 1 / MPF pass-through)	--
4	41X0388	1	1	Redrive guide	“Redrive guide removal” on page 354
5	41X0384	1	1	Isolation unit	“Isolation unit removal” on page 371
6	41X0758	1	1	Aligner drivetrain kit	--
7	41X0387	1	1	Motor (deskew)	“Motor (deskew) removal” on page 299
8	41X0393	1	1	Motor (black only retract)	“Motor (black only retract) removal” on page 309
9	41X0564	1	1	Motor (EP drive)	“Motor (EP drive) removal” on page 296
10	41X0264	1	1	EP gear box	“EP gear box removal” on page 302
NS	41X0897	4	1	Developer hold down arm	“Developer hold down removal” on page 363

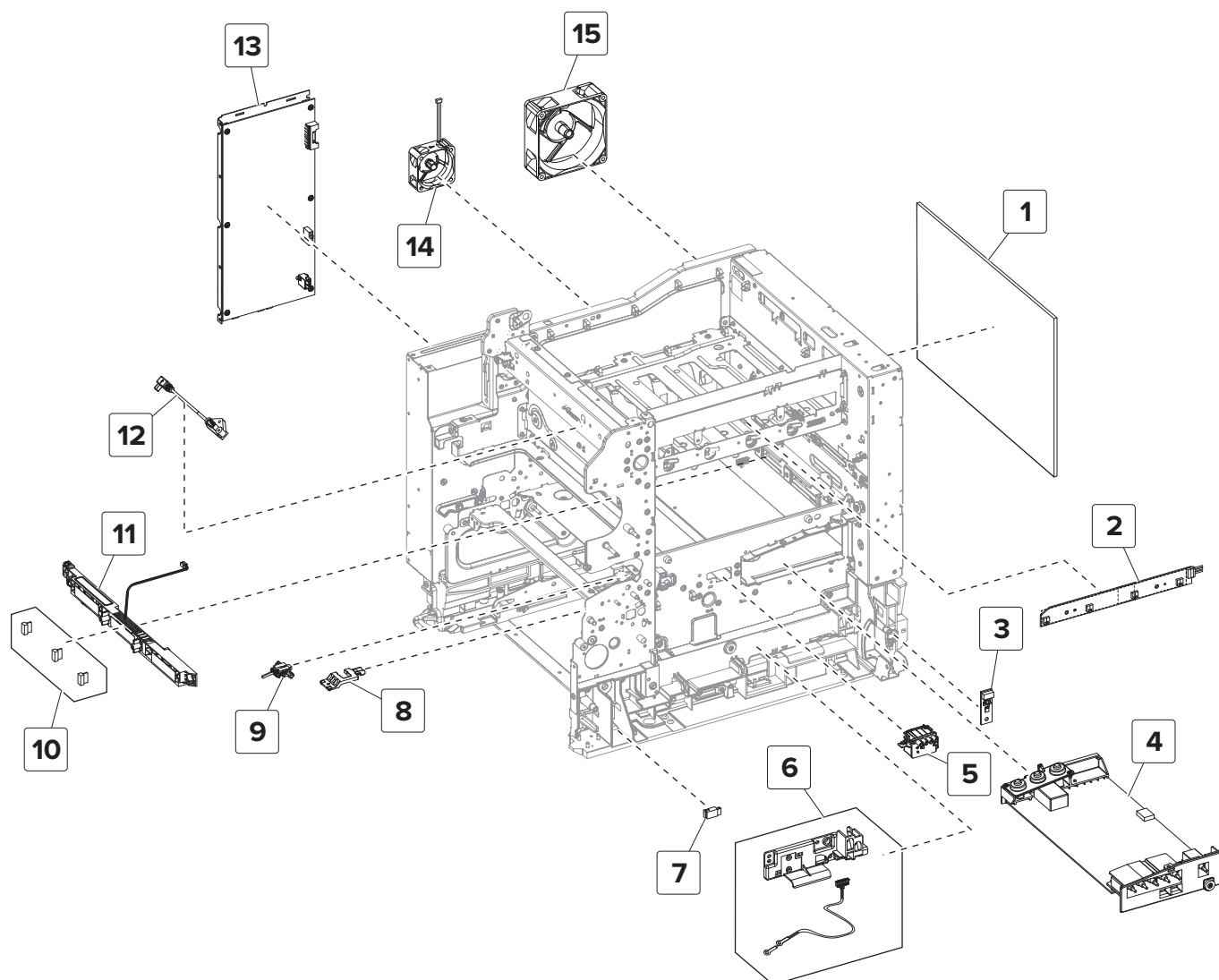
Assembly 9: Duplex



Assembly 9: Duplex

Asm-index	P/N	Units/mach	Units/FRU	Description	Removal procedure
1	41X0447	2	1	Sensor (fuser buckle / narrow media)	“Sensors (fuser buckle and narrow media) removal” on page 294
2	41X0824	1	1	Static brush	--
3	41X0379	2	1	Guide spring	--
4	41X0378	1	1	Tensioner belt	“Tensioner belt removal” on page 292
5	41X0446	1	1	Sensor (duplex staging)	--
6	41X0377	1	1	Pivot shaft	“Pivot shaft removal” on page 291
7	41X0400	1	1	Cable cover	--
8	41X0407	1	1	Duplex outer guide	“Duplex outer guide removal” on page 289
9	41X0376	1	1	Duplex inner guide	“Duplex inner guide removal” on page 291

Assembly 10: Electrical

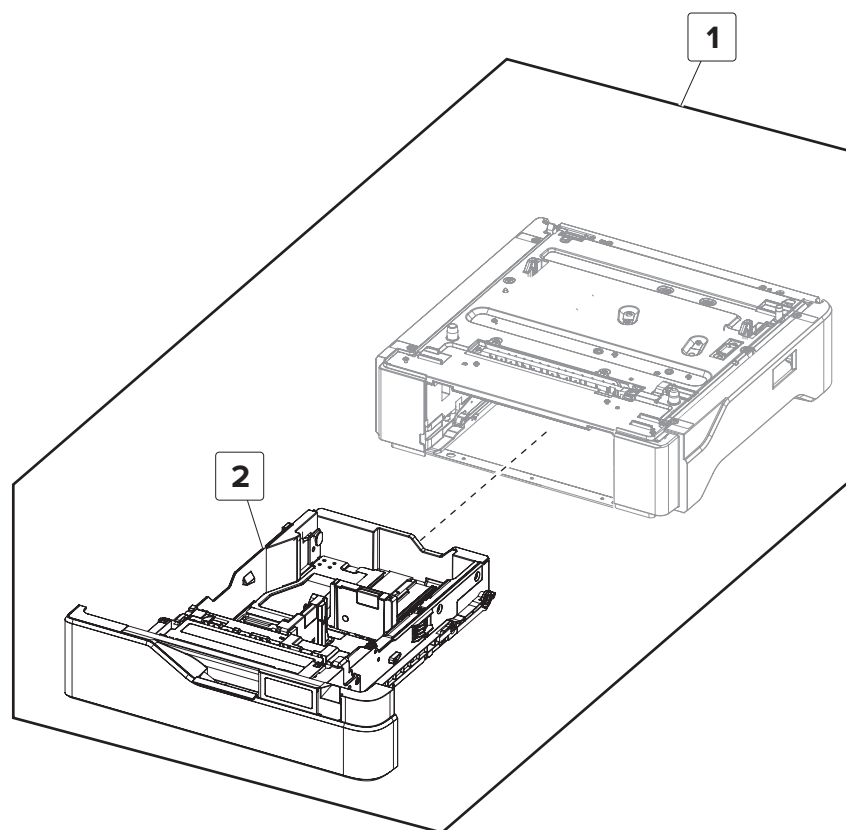


Assembly 10: Electrical

Asm-index	P/N	Units/mach	Units/FRU	Description	Removal procedure
1	41X0267	1	1	Controller board	“Controller board removal” on page 357
2	41X0394	1	1	TMC card	“TMC card removal” on page 315
3	41X0785	1	1	Sensor (weather station)	“Sensor (weather station) removal ” on page 311
4	41X0270	1	1	High voltage power supply	“HVPS removal” on page 319
5	41X0382	1	1	Toner cartridge contact	“Toner cartridge contacts removal” on page 328
6	41X0486	1	1	Sensor (waste toner contact)	“Sensor (waste toner contact) removal ” on page 314
7	41X0566	1	1	Sensor (MPF paper present)	“Sensor (MPF paper present) removal” on page 322
8	41X0450	1	1	Sensor (media type)	“Sensor (media type) removal” on page 340
9	41X0385	1	1	Sensor (input)	“Sensor (input) removal” on page 341
10	41X0578	1	3	TPS wipers	“TPS wiper removal” on page 332
11	41X0383	1	1	Sensor (TPS)	“Sensor (TPS) removal” on page 325
12	41X0441	1	1	Control panel USB cable	--
13	41X0425	1	1	Low voltage power supply	“LVPS removal” on page 305
14	41X0398	1	1	Fuser fan	“Fuser fan removal” on page 299
15	41X0397	1	1	Main fan	“Main fan removal” on page 301
NS	41X0719	1	1	Control panel cable kit	--
NS	41X0575	1	1	TPS cable	--

Asm-index	P/N	Units/mach	Units/FRU	Description	Removal procedure
NS	41X0413	1	1	Cable replacement pack: <ul style="list-style-type: none"> • Output roll motor cable • Paper path motors cable • CMY cartridge motors cable • Fuser motor cable • K cartridge ITM motor cable • Lower path sensors cable • Upper path sensors cable • Fuser DC cable • Input option cables • HVPS cable • LVPS DC cable • Fuser AC cable • AC line in cable • BOR motor cable 	--
NS	41X0418	1	1	Control panel FFC cable	--
NS	41X0420	1	1	Speaker cable	--

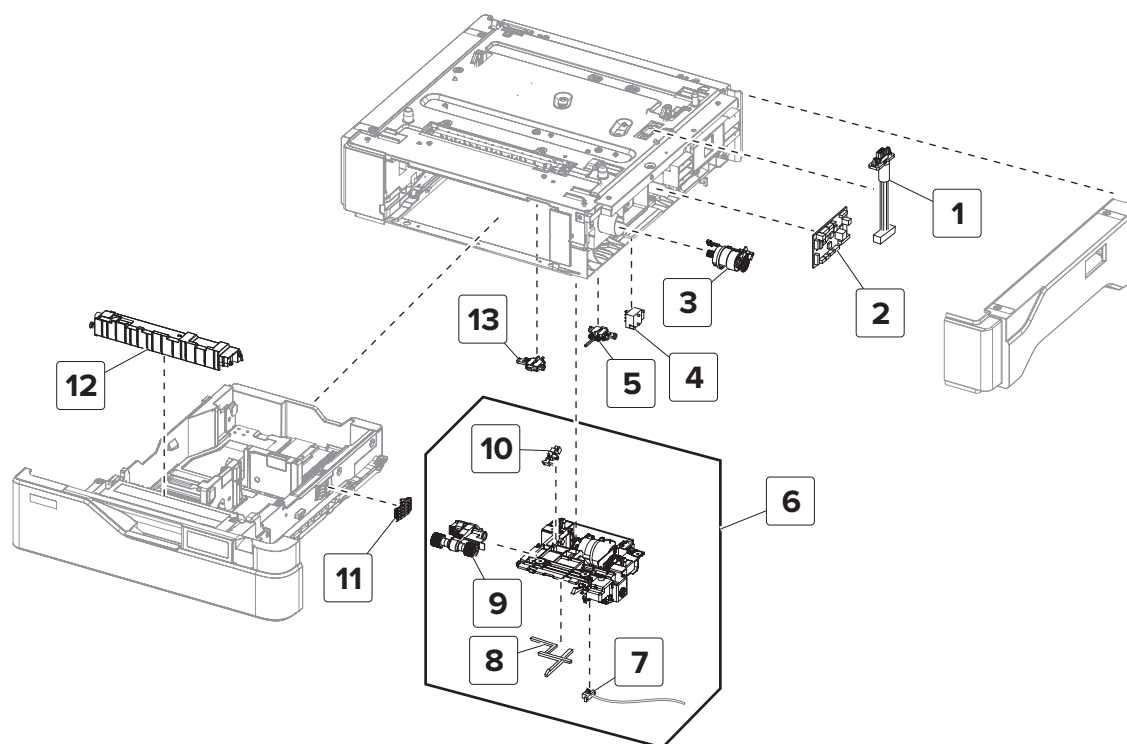
Assembly 11: 550-sheet tray option 1



Assembly 11: 550-sheet tray option 1

Asm-index	P/N	Units/opt	Units/FRU	Description	Removal procedure
1	41X0271	1	1	550-sheet tray	--
2	41X0361	1	1	550-sheet tray insert	--

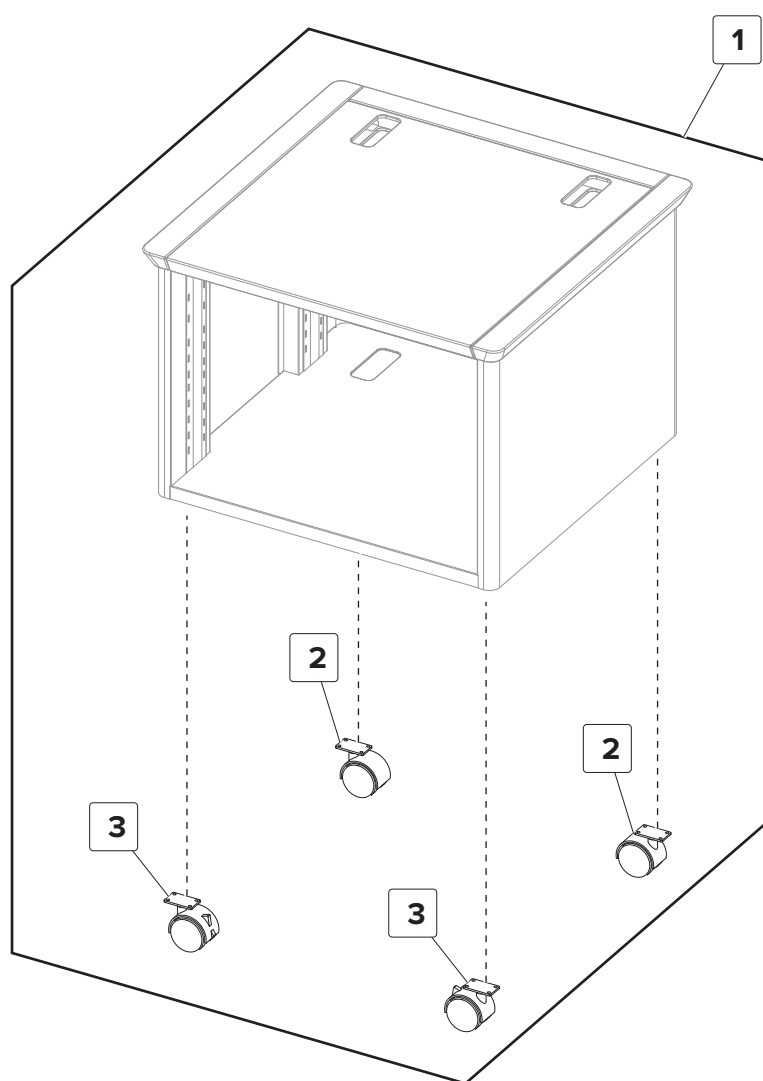
Assembly 12: 550-sheet tray option 2



Assembly 12: 550-sheet tray option 2

Asm-index	P/N	Units/opt	Units/FRU	Description	Removal procedure
1	41X0471	1	1	550-sheet tray interface cable	“550-sheet tray interface cable removal” on page 383
2	41X0331	1	1	550-sheet tray controller board	“550-sheet tray controller board assembly removal” on page 382
3	41X0466	1	1	Motor (550-sheet tray pass-through)	“Motor (550-sheet tray pass-through) removal” on page 376
4	40X7911	1	1	Sensor (550-sheet tray paper size)	“Sensor (550-sheet tray paper size) removal” on page 380
5	41X0468	1	1	Sensor (550-sheet tray trailing edge)	“Sensor (550-sheet tray trailing edge) removal” on page 380
6	41X0396	1	1	550-sheet tray paper feeder	“550-sheet tray paper feeder removal” on page 378
7	41X0469	1	1	Sensor (550-sheet tray index)	“Sensor (550-sheet tray index) removal” on page 386
8	41X0472	1	1	550-sheet tray empty sensor actuator	“550-sheet tray empty sensor actuator removal” on page 384
9	41X0956	1	1	550-sheet tray pick roller	--
10	41X0470	1	1	Sensor (550-sheet tray empty)	“Sensor (550-sheet tray empty) removal” on page 385
11	41X0373	1	1	550-sheet tray paper size sensor actuator	--
12	41X0374	1	1	550-sheet tray separator pad	--
13	41X0334	1	1	Sensor (550-sheet tray pass-through)	“Sensor (550-sheet tray pass-through) removal” on page 379

Assembly 13: Adjustable stand



Assembly 13: Adjustable stand

Asm-index	P/N	Units/opt	Units/FRU	Description	Removal procedure
1	41X0764	1	1	Locking caster	--
2	41X0775	2	1	Nonlocking caster	--
3	41X0774	2	1	Locking caster	--

Assembly 14: Miscellaneous parts

Asm-index	P/N	Units/mach	Units/FRU	Description	Removal procedure
NS	41X0015	1	1	Adapter–N8360 ISP + NFC/BLE dual band	--
NS	40X9652	1	1	Adapter–Fiber gigabit ISP	--
NS	41X0028	1	1	DDR3 RAM, (G2) 2GB, 512Mx32, 204 SODIMM, Unbuffered Non-ECC	--
NS	41X1011	1	1	Font card, Hebrew	--
NS	41X1012	1	1	Font card, Arabic	--
NS	41X1013	1	1	Font card, Simplified Chinese	--
NS	41X1014	1	1	Font card, Traditional Chinese	--
NS	41X1015	1	1	Font card, Korean	--
NS	41X1016	1	1	Font card, Japanese	--
NS	41X1002	1	1	Forms bar code card	--
NS	41X1006	1	1	Prescribe card	--
NS	41X1004	1	1	IPDS SCS TNE card	--
NS	41X1010	1	1	Flash card	--

Assembly 15: Power cords

Asm-index	P/N	Units/mach	Units/FRU	Description	Removal procedure
NS	40X7104	1	1	US, Canada, Latin America LV	--
NS	40X0288	1	1	Argentina	--
NS	40X0259	1	1	Brazil LV	--
NS	40X0273	1	1	Chile, Uruguay	--
NS	40X0297	1	1	Bolivia, Peru, Paraguay	--
NS	40X0301	1	1	Australia, New Zealand	--
NS	40X3609	1	1	Japan	--
NS	40X1792	1	1	Korea	--
NS	40X0303	1	1	PRC	--
NS	40X1791	1	1	Taiwan	--
NS	40X0271	1	1	Hong Kong	--
NS	40X0279	1	1	Philippines, Thailand	--
NS	40X1767	1	1	Indonesia, Vietnam, Cambodia, Laos	--
NS	40X1773	1	1	Bangladesh, Nepal, Bhutan	--
NS	40X0271	1	1	Singapore, Malaysia, Pakistan, Sri Lanka, Myanmar, Brunei, India	--
NS	40X1767	1	1	Algeria, Austria, Benelux (Belgium, Luxembourg, Netherlands), Bosnia, Bulgaria, Croatia, Czech Republic, Egypt, Estonia, France, Germany, Greece, Hungary, Iceland, Italy, Latvia, Lithuania, Morocco, Poland, Portugal, Romania, Russia (CIS), Serbia, Slovakia, Spain, Turkey	--
NS	40X1774	1	1	Nordics	--
NS	40X0275	1	1	Israel	--
NS	40X1773	1	1	South Africa	--
NS	40X1772	1	1	Switzerland	--
NS	40X0271	1	1	UK, Saudi Arabia	--

